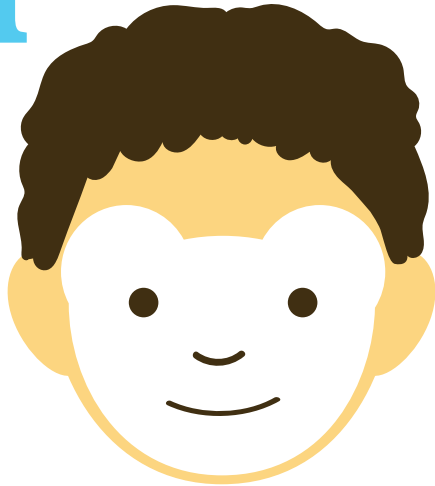


# CAPTAIN BARNACLES

## FACE PAINTING GUIDE



1



PAINT THE HEAD AND EARS IN WHITE

2



PAINT THE INNER EARS AND MUZZLE IN BLUE

3



PAINT THE NOSE IN GREY  
PAINT THE HAT IN BLUE

4

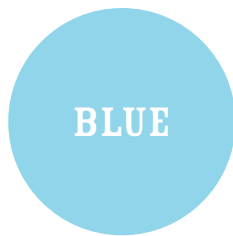


PAINT THE OCTO LOGO IN DARK BLUE AND WHITE.  
PAINT THE STRIPES IN DARK BLUE

YOU'LL NEED...



WHITE



BLUE



GREY



DARK  
BLUE

